



Queers on a Bender & Trannys off the Rails

NZSHS Conference 2011

Thomas Hamilton & Priscilla Penniket

RainbowYouth
Know who you are, be who you are

IDENTITIES.....



QUEER



QUEEN

LESBIAN



FA'AFAFINE



BI

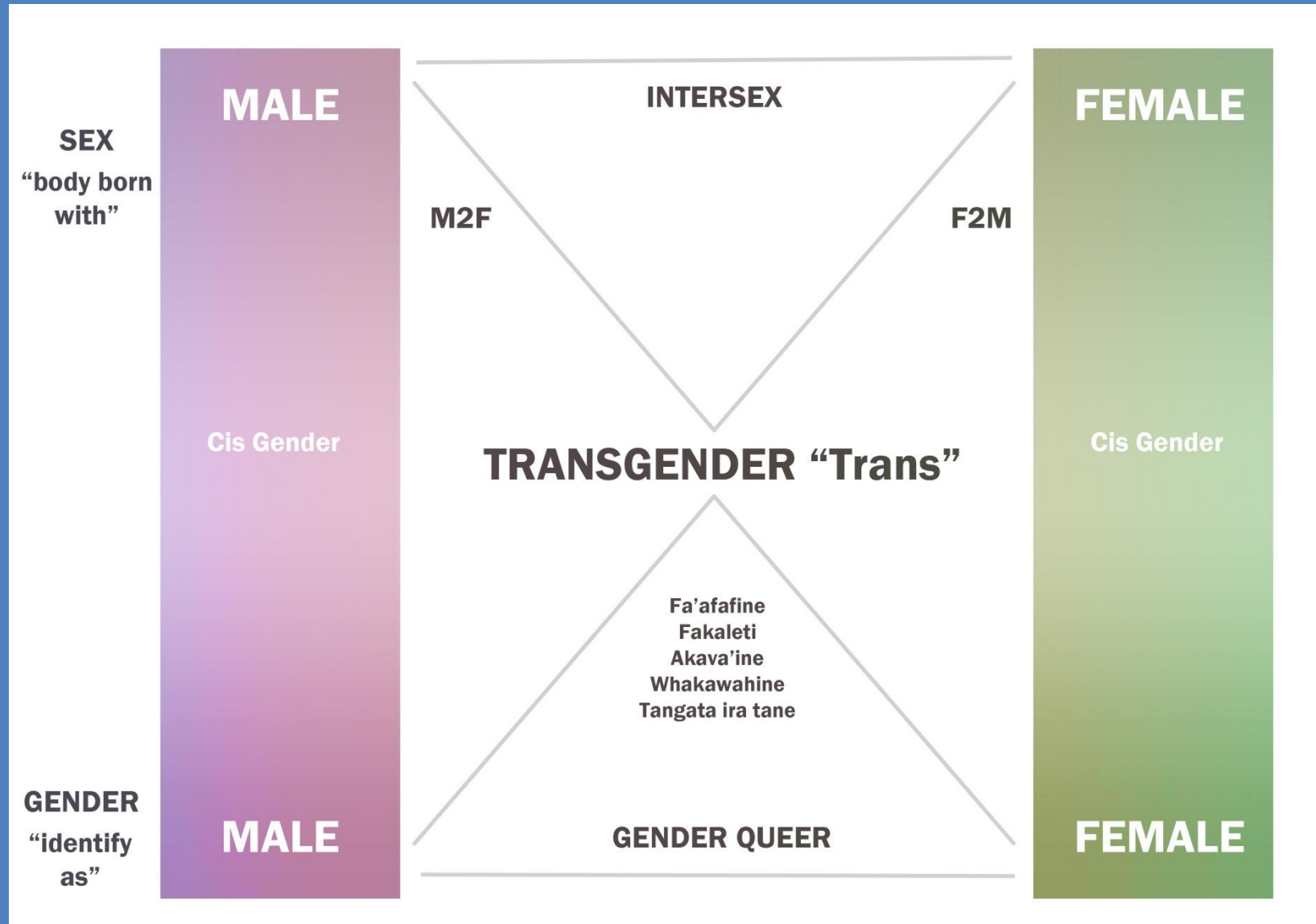


TAKATAPUI

TRANS



SEX AND GENDER...



ALCOHOL.....DRUGS...

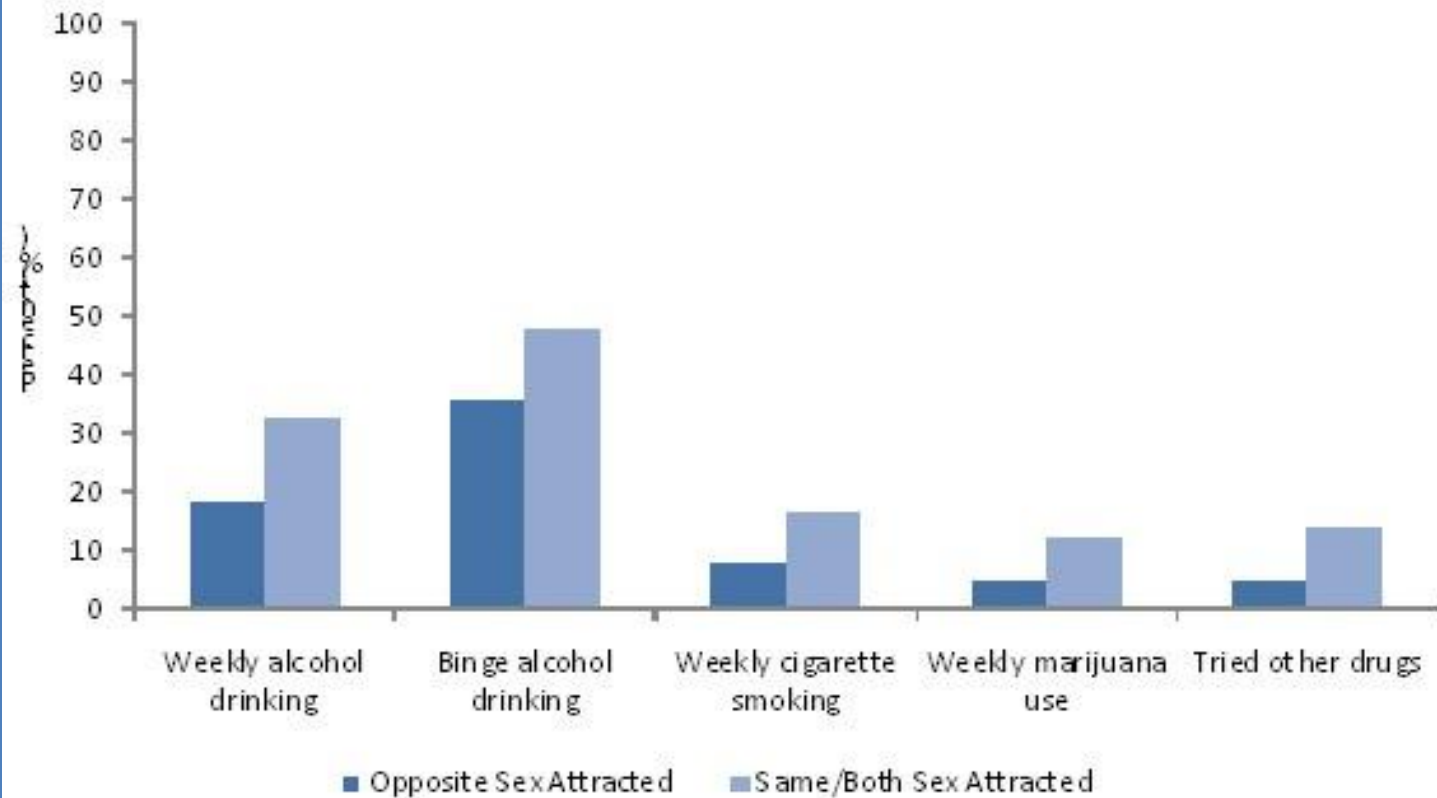


* Same/both-sex-attracted students were much more likely to say they had drunk alcohol, taken drugs and smoked, but their reports of smoking and marijuana use was down on 2001 levels. Only their alcohol use had increased slightly.

"Youth '07 launched tomorrow, it's not all gloom and doom ya know. Queer young peeps rock," Rainbow Youth chairperson Toni Reid 'Twittered' the night before New Zealand's biggest-ever insight into the lives of gay/bi young people was presented to the public.

STATISTICS SAY THIS.....

Figure 13. Alcohol, cigarette, marijuana and other drug use¹



WHATS GOING ON.....

Risk factors



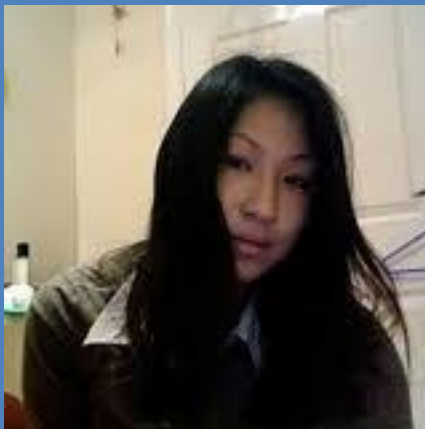
A STORY or 3 FROM RY.....



ALAC –research shows that same sex and both sex attracted women pre-load and drink heavily in the privacy of their own home.



Referrals from drug and alcohol youth support services are few considering the high statistics shown by the Youth '07' research.



Not all queer and trans youth have alcohol and drug issues. Stress from discrimination, isolation and the pressure to belong in hetro-normative society and integrate with queer culture can lead to exploring excessive drinking or drug use as a coping mechanism..

HOW TO REACH US.....

Priscilla Penniket – Education Coordinator

+64 9 376 4155

+64 21 384 553

priscilla@rainbowyouth.org.nz

Tom Hamilton – Executive Director

+64 9 376 4155

+64 21 529 778

thomas.hamilton@rainbowyouth.org.nz